

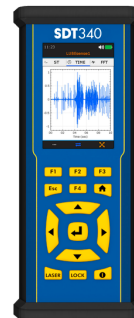
ULTRASOUND VIBRATION ANALYSIS INSTRUMENT AND SOLUTIONS

The Best Solution for Ultrasound and Vibration Measurement, Analysis and Diagnosis

Software: Ultranalysis® Suite

- Powerful and versatile signal analysis tool
- User defined alarm limit
- Remarkable and variable dashboard
- Third party data access with any SQL query tools

SDT340



U
S
A
G
E

-  Bearing Detect
-  Pipe Leaks
-  Bearing Grease
-  Abnormal Discharge
-  Valve Tightness
-  Hydraulics System
-  Tightness Test

Friction



Impact



Turbulence



Easy to use • Wide application • Stable
Reliable • Variable accessory plans

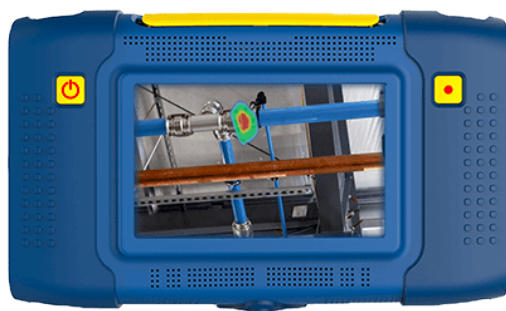
Measurement type	Ultrasound, Vibration, Infrared temperature and Tachometer
Dual input	One for ultrasound measurement and one for vibration
Frequency Range	5 Hz to 100 kHz (Ultrasound) 5 Hz to 10 kHz (Vibration)
Sampling rate	32、64、128、256 kHz
Signal length per recording	600 sec (32 kHz)、150 sec (128 kHz)
Data memory	286 min (32 kHz)、71 min (128 kHz); Total 4.2 GB
Sensitivity	ASTM 1002-11 Class I
Display	Full color TFT 3.5" screen 320x48
Bluetooth	For audio streaming
Housing Extruded	aluminum, shock proof rubber protections
Dimension	211 x 93.5 x 44 mm
Weight	720 g
Headphone	Wired headset and wireless Bluetooth headset
Warranty	Lifetime warranty



SonaVu Imaging Camera

Features

- Visualize ultrasound measurements
- Variable applications
- Long measurement range up to 50m



112 ultrasound
sensors array

U
S
A
G
E

- Pipe leaks
- Vacuum leaks
- Abnormal discharge
- Abnormal turbulence



SonaVu w/ Hand Strap and Rubber Grip
SonaVu Power Supply w/ Adapters
SonaVu Cleaning Kit
Headphone, Neckband + 1/4" > 1/8" Adapter
SDT930 Custom Carrying Case

Basic Kit



SonaVu w/ Hand Strap and Rubber Grip
SonaVu Power Supply w/ Adapters
SonaVu Cleaning Kit
SDT LEAKChecker Receiver w/ 16mm Tip
Battery Alkaline 1.5V AA, 2 pack
USB Cable
Screwdriver For Battery Cover
Headphone, Neckband + 1/4" > 1/8" Adapter
SDT930 Custom Carrying Case

Pro Kit



Sensor	112 Digital MEMS Microphone
Bandwidth	2 to 48 kHz
Sampling rate	96 kHz
Microphone Sensitivity	-41 dBFS
Signal-to-Noise Ratio	66 dB(A)
Camera refresh rate	25 Hz
Screen	5" Full color touch screen
Measuring distance	0.3 to 50 m
Battery life	4 hours
Dimensions	237 x 146 x 56 mm
Weight	1.2 kg
Operating temperature	-20 to 50°C

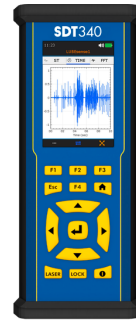
超音波振動分析儀及解決方案

超音波與振動的測量、分析與診斷之最佳儀器

軟體: Ultranalysis® Suite

- 功能強大的訊號分析工具
- 可設定的報警界值
- 精美多樣的儀錶板
- 可透過第三方 SQL 資料庫存取

SDT340



應用

-  軸承檢測
-  管路洩漏
-  軸承潤滑
-  異常放電
-  閥門鬆緊
-  液壓洩漏
-  密封檢測

摩擦、撞擊、紊流



方便且易上手 · 應用廣泛 · 配件多樣
· 穩定、耐用 · 可靠

接觸式



振動



非接觸式



超音波音源



感測器
與配件

測量類型	超聲波、振動、紅外線溫度與轉速
雙通道輸入	可同時測量超聲波與振動
頻寬	5 Hz to 100 kHz (超聲波) 5 Hz to 10 kHz (振動)
採樣率	32、64、128、256 kHz 四種模式
單次量測時長	600 sec (32 kHz)、150 sec (128 kHz)
儲存容量	286 min (32 kHz)、71 min (128 kHz) 共 4.2 GB
靈敏度	ASTM 1002-11 Class I
畫面	3.5 吋 (320 x 480) 全彩螢幕
藍芽	聲音持續傳輸播放
材質	鋁、橡皮保護墊
尺寸	211 x 93.5 x 44 mm
重量	720 g
耳機	有線式或無線藍芽式耳機
保固	終生保固

視覺化超聲波診斷、分析的最佳解決方案

特色

- 可視化的超聲波測量
- 應用廣泛
- 測量範圍達 50 公尺



超音波感測器
陣列共 112 組
麥克風

應用

管路洩漏
真空洩漏
異常放電
異常紊流



SONAVU
Powered by SDT

SonaVu + 手帶 + 橡膠套
SonaVu 電源供應器+轉接器
SonaVu 清理套組
耳罩式耳機 +1/4"to 1/8"轉接器
SDT930 客製化手提箱

基本



SonaVu + 手帶 + 橡膠套
SonaVu 電源供應器+轉接器
SonaVu 清理套組
SDT LEAKChecker 接收器
兩顆鹼性電池 1.5V AA
USB 連接線
螺絲起子(用於電池盒)
耳罩式耳機 +1/4"to 1/8"轉接器
SDT930 客製化手提箱

專業版



感測器	112 組數位 MEMS 麥克風
頻寬	2 to 48 kHz
採樣率	96 kHz
麥克風靈敏度	-41 dBFS
訊號雜訊比	66 dB(A)
相機刷新率	25 Hz
畫面	5 吋 彩色觸控螢幕
量測距離	0.3 to 50 m
電池續航力	4 小時
尺寸	237 x 146 x 56 mm
重量	1.2 kg
操作溫	-20 to 50°C